

**PRIMARY**

STAGES

AT 59E59 THEATERS

in association with Jamie deRoy and Ted Snowdon



Original production photo by James Leynse

# *the* TRIBUTE ARTiST

Written by and starring Charles Busch  
Directed by Carl Andress



## WELCOME TO OUR VIRTUAL SEASON!

Primary Stages is excited to present its Fall 2020 Virtual Season!

In response to this uncertain and ever-changing landscape, we have reimagined our programming to bring Off-Broadway to your home and create community in the current theatrical climate. Starting this Fall, we return to our roots with the Foundation Series, including ***The Tribute Artist*** by **Charles Busch** and ***The Night Watcher*** by **Charlayne Woodard**. In our Living Room Commissions, artists who are reimagining the art form create new work in this time of evolution, including **Inda Craig-Galván**, **Kate Hamill**, **Chesney Snow**, and **Susan Soon He Stanton**.

This Virtual Season will break the fourth wall of how and why we create, renewing our commitment to developing new works and breaking down both financial and physical barriers to attending the theater for audiences worldwide. Through building on our strong foundation of artists and fostering new growth by amplifying essential voices who will push the boundaries of what theater can be, we are building this virtual home – and you, our audience, are the final brick in our wall.

We're thrilled to kick off our renewed partnership with 59E59 Theaters by virtually reviving the last show we presented on their stage – *The Tribute Artist* by Charles Busch. This show, originally presented in our 2013/14 Season, brings back almost entirely the original cast and creative team, and we couldn't be more excited to have the tour-de-force pairing of Charles Busch and Carl Andress on our virtual stage. We hope Busch's signature blend of quick-witted banter and wacky hijinks brings some levity and laughter to your living room.

A handwritten signature in black ink that reads "Andrew".

Andrew Leynse  
Artistic Director

A handwritten signature in black ink that reads "Shane".

Shane D. Hudson  
Executive Director



Artistic Director      Executive Director  
**Andrew Leynse**   **Shane D. Hudson**  
Founder   **Casey Childs**

in association with **Jamie deRoy** and **Ted Snowdon**  
presents

# THE TRIBUTE ARTIST

by **Charles Busch**

with **Mary Bacon, Charles Busch, Julie Halston,  
Keira Keeley, Carole Monferdini, Jonathan Walker**

Set Design **Anna Louizos**  
Original Compositions **Lewis Flynn**  
Wig Design **Katherine Carr**

Zoom Manager/Production Coordinator **Thomas Dieter**  
Editor **Dave Monteagudo**

General Press Representative **Matt Ross**   **Public Relations**

General Manager **Dean A. Carpenter**  
Associate Artistic Director **Erin Daley**  
Digital Marketing and Social Media Coordinator **Braley Degenhardt**  
Production Manager **Will Duty**  
Artistic Fellow **Covi Loveridge Brannan**  
Director of ESPA **Sarah Matteucci**  
Assistant General Manager **Claudia McCoy**  
Director of Development **Erica Raven-Scorza**

Directed by **Carl Andress**

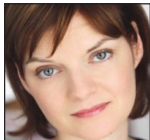
*Special thanks to Daryl Roth for her support of this production  
and to the National Endowment for the Arts for their support of this commission in 2014.*

*The Tribute Artist was originally produced by Primary Stages at 59E59 Theaters in the 2013/14 Season.*

**CAST** (IN ALPHABETICAL ORDER)

---

CHRISTINA ..... MARY BACON  
JIMMY ..... CHARLES BUSCH  
RITA ..... JULIE HALSTON  
OLIVER ..... KEIRA KEELEY  
ADRIANA ..... CAROLE MONFERDINI  
RODNEY ..... JONATHAN WALKER



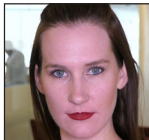
MARY  
BACON



CHARLES  
BUSCH



JULIE  
HALSTON



KEIRA  
KEELEY



CAROLE  
MONFERDINI



JONATHAN  
WALKER

*The Tribute Artist* is approximately 2 hours 10 minutes, with one intermission.

**PLAYWRIGHT**

---



**CHARLES BUSCH** has forged a unique place in the world of entertainment as playwright, actor, director, novelist, cabaret performer, and drag icon. He is the author and star of over twenty-five plays, including *The Divine Sister*, *The Lady in Question*, *Red Scare on Sunset*, *The Confession of Lily Dare*, and *Vampire Lesbians of Sodom*, one of the longest running plays in the history of Off-Broadway. His play *The Tale of the Allergist's Wife* ran for 777 performances on Broadway, won the Outer Critics Circle John L. Gassner Award for playwrighting, received a Tony nomination for Best Play, and is the longest running Broadway comedy of the past twenty-five years. He wrote and starred in the film versions of his plays *Psycho Beach Party* and *Die Mommie Die!*, the latter of which won him the Best Performance Award at the Sundance Film Festival. For two seasons, he appeared as Nat Ginzburg on the HBO series “OZ” and is the author of the autobiographical novel *Whores of Lost Atlantis*. He has directed two films: the Showtime short subject *Personal Assistant* and a

feature, *A Very Serious Person*, which won an honorable mention at the Tribeca Film Festival. Due to his love and knowledge of film and theater history, he has appeared as a guest programmer and in numerous documentaries for Turner Classic Movies, and has lectured and conducted master classes at many colleges and universities, including NYU, Harvard, UCLA, and Amherst College. In 2003, Mr. Busch received a special Drama Desk Award for career achievement as both performer and playwright, and was given a star on the Playwrights Walk outside the Lucille Lortel Theatre. He is also the subject of the acclaimed documentary film *The Lady in Question is Charles Busch*. He is a two-time MAC award winner and has performed his cabaret act in many cities, including San Francisco, Los Angeles, Chicago, New Orleans, Philadelphia, London, Paris, Barcelona, and New York. In winter of 2016, his show *The Lady at the Mic* premiered at Jazz at Lincoln Center's American Songbook series. His first CD, *Charles Busch Live at Feinstein's 54 Below*, was released by Broadwayrecords. [Charlesbusch.com](http://Charlesbusch.com)



# WHO'S WHO

---

**MARY BACON** (*Christina*) is the 2020 Sam Norkin Drama Desk Award winner. Broadway: *Rock N' Roll*, *Arcadia*. Select Off-Broadway: *Coal Country*, *Giant* (The Public); *Nothing Gold Can Stay* (Partial Comfort); *Women Without Men* (The Mint/Lortel); *Happy Now*, *Roads to Home*, *Harrison*, *TX*, *The Tribute Artist* (Primary Stages); *Eccentricities of A Nightingale* (TACT). TV/Film: *Lost Girls*, "Blue Bloods," "The Blacklist," "Madam Secretary," "Boardwalk Empire," "Mildred Pierce," "The Mist," "The Good Wife," "Elementary," "SVU." Regional credits and more at [marybacon.net](http://marybacon.net).

**JULIE HALSTON** (*Rita*) recently starred as Rita Marshall in the Broadway production of *Tootsie*. Other credits include Richard Greenberg's *The Babylon Line* at Lincoln Center and her acclaimed performance as Gay Wellington in the Broadway production of *You Can't Take it With You*, for which she received The Richard Seff Award and a Drama Desk Nomination. Other Broadway credits include *On The Town*, *Anything Goes*, *The Twentieth Century* (Outer Critics Circle Nomination), and *Hairspray*. She is a founding member of Charles Busch's legendary theatre company and co-starred with Mr. Busch in numerous productions, including *The Divine Sister* (Drama Desk Nomination), *Red Scare on Sunset* (Drama Desk Nomination), and *Vampire Lesbians of Sodom*. Television viewers know her as Bitsy Von Muffling on "Sex and The City." Other credits include "The Class," "Difficult People," "Law and Order: SVU," and most recently "Divorce" and "Almost Family." She was a frequent co-host on Susan Haskin-Doloff's Emmy Award-Winning show "Theater Talk" and in 2011 was honored with a Lifetime Achievement Award from The Off-Broadway Alliance. In addition, Miss Halston was the recipient of the 2015 Special Guest Star Award for her role in "The Mentors," the Lewis Black series at the NYCWEB FEST.

**KEIRA KEELEY** (*Oliver*) is flattered to be reviving her role as Oliver. Other NY highlights include *Angels In America* (as Harper), *F2M* by Patricia Wetting (as Parker), award-winning *The Glass Menagerie*

(as Laura), Zoom performances for *Pride Week in Corning*, and *For You, Mom and Dad in Elmira*.

**CAROLE MONFERDINI** (*Adriana*). Theatre highlights include long runs in Charles Busch's *Vampire Lesbians of Sodom*; *The Club*, directed by Tommy Tune (OBIE Award for performance); *Full Gallop*, Off-Broadway and in the national tour; standby for Diana Rigg in the National Theatre of G. Britain's production of *The Misanthrope* on Broadway; among others. Regional theatre in 26 states. Film: *Next Stop, Greenwich Village*; *The Bell Jar*; *The Brass Ring*; *Hank Boyd is Dead*; and *Love, Repeat*. She is a member of the Actors Center.

**JONATHAN WALKER** (*Rodney*). Broadway: *The Assembled Parties*, *Twentieth Century*, *After The Fall*, *Rocky*. Off-Broadway: World premieres in NYC of plays by Richard Greenberg, Donald Margulies, Wendy McCloud, Doug Wright, James Lapine, Peter Parnell, and Charles Busch. Film: *The Chaparone*, *Man On A Ledge*, *Michael Clayton*, *People I Know*, *Heights*, *Far From Heaven*. TV: "Bull," "The Blacklist," "Blue Bloods," "Madam Secretary," "Quantico," "The Following," "Elementary," "The Good Wife."

**CARL ANDRESS** (*Director*) is an American theater director whose credits include the world premieres of Charles Busch's critically acclaimed plays such as *The Divine Sister*, *The Confession of Lily Dare*, *The Third Story*, *Judith of Bethulia*, *Cleopatra*, *Bunnica*, *Queen Amarantha*, and *Shanghai Moon*, as well as the New York production of *Die Mommie Die!* and the annual *Times Square Angel* at Theater for the New City. Other credits include Tim Pinckney's *Still at Risk*, Carmen Pelaez's *Fake and Rum & Coke*, Matthew Lombardo's *Who's Holiday!*, Douglas Carter Beane's *The Cartells*, Joe Godfrey's *Romance Language*, and regional productions of Paul Rudnick's *I Hate Hamlet*, *The Tale of the Allergist's Wife*, *My Fair Lady*, and *Crush the Infamous Thing – The Adventures of the Hollywood Four*. Mr. Address staged the New York concert

## WHO'S WHO (CONT'D)

---

premieres of *The Visit*, *A Wonderful Life*, *Mr. Magoo's Christmas Carol*, and *Valley of the Dolls*, all to benefit The Actors Fund. He has also directed such productions as *Tenderloin*, *Harold & Maude*, *I Love My Wife*, and *The Mad Show* for the York Theatre's "Musicals in Mufti" series, as well as *Here's to the Girls!* and *Being Comden & Green* for the 92Y's "Lyrics and Lyricists" series. He has also produced and directed many industry and developmental readings, plus events and galas for such organizations as The Vineyard Theater, Primary Stages, The Pulmonary Fibrosis Foundation, Literacy Partners, Broadway Tastes, the NFFR, and Broadway on the Boardwalk in Atlantic City, among others. [Carlandress.com](http://Carlandress.com)

**JAMIE deROY** (Co-Producer) is an award-winning performer who is also a seven time Tony Award-winning producer for *The Ferryman*, *Angels in America*, *The Band's Visit*, *Once On This Island*, *A Gentleman's Guide...*, *Vanya and Sonia...*, and *The Norman Conquests*. Currently on Broadway: *To Kill a Mockingbird*, *The Inheritance*, *Ain't Too Proud*, *Beetlejuice*, and *Slave Play*, among others. For Primary Stages, Jamie has co-produced 22 plays, including Theresa Rebeck's *Downstairs and Poor Behavior*; Kate Hamill's *Little Women and Pride and Prejudice*; David Ives' *All in the Timing and Lives of the Saints*; Horton Foote's *The Roads to Home*, *Harrison TX*, and *Dividing the Estate*; A.R. Gurney's *Black Tie*, *Buffalo Gal*, and *Indian Blood*; Terrence McNally's *Dedication or The Stuff of Dreams*; and Charles Busch's *The Tribute Artist* and *The Confession of Lily Dare*. Jamie hosts the cable TV show "Jamie deRoy & Friends" and sits on the Board of Inside Broadway and Primary Stages.

**TED SNOWDON** (Co-Producer) has a passion for new drama and was the proud producer of Michael McKeever's play *Daniel's Husband* last fall at the Westside Theatre, which he had previously presented with Primary Stages in 2017 and with Penguin Rep in 2016. He also collaborated with Primary Stages on earlier productions of A.R. Gurney's *Black Tie*, Terence McNally's *The Stendhal Syndrome* starring Richard Thomas and Isabella Rossellini, Jonathan Tolins' *Secrets of the Trade*, and *The Confession of Lily Dare* and

*The Tribute Artist* by Charles Busch. With The Directors Company, he presented Allan Leicht's *My Parsifal Conductor* last year, directed by Robert Kalfin. His Off-Broadway commercial credits include two major Jon Tolins successes, *Buyer & Cellar* (starring Michael Urie) and *The Last Sunday in June*, along with Aaron Posner's stage version of *My Name Is Asher Lev*, Mike Bartlett's *Cock*, and David Cromer's staging of Wilder's *Our Town*. His 40 years of Broadway credits extend from 1979's Tony Award-winning *The Elephant Man* by Bernard Pomerance, up to Robert Schenkkan's LBJ sequel *The Great Society* this fall at the Vivian Beaumont Theatre. In between, he has been a producing partner on Edward Albee's *Three Tall Women* starring Glenda Jackson, Lynn Nottage's Pulitzer Prize-winning *Sweat*, McNally's *Master Class* starring Tyne Daly (also in London), Katori Hall's *The Mountaintop*, Neil LaBute's *Reasons To Be Pretty*, Donald Margulies' *Time Stands Still* with Laura Linney, David Mamet's *November* starring Nathan Lane, Douglas Carter Beane's *The Little Dog Laughed* starring Julie White, Stephen Temperly's *Souvenir* starring Judy Kaye, and *The Twilight of the Golds* by Jon Tolins; along with the musicals *Spring Awakening*, *A Gentleman's Guide to Love & Murder*, *The Visit* starring Chita Rivera, and *LoveMusik*, directed by the late Hal Prince. He is on the board of the Glimmerglass Festival and is a broad supporter of the arts in general, spoken word and music and theater in particular.

### SPECIAL THANKS

Staff of 59E59 Theaters  
Katherine Carr  
Ilen DeNio  
Jamie deRoy  
Jill BC Du Boff  
Daryl Roth  
Chesney Snow  
Ted Snowden



**SAG-AFTRA**

FOR THE ORIGINAL PRODUCTION OF *THE TRIBUTE ARTIST*

CHRISTINA ..... MARY BACON  
JIMMY ..... CHARLES BUSCH  
RITA ..... JULIE HALSTON  
OLIVER ..... KEIRA KEELEY  
ADRIANA ..... CYNTHIA HARRIS  
RODNEY ..... JONATHAN WALKER

Set Design **Anna Louizos**  
Costume Design **Gregory Gale**  
Lighting Design **Kirk Bookman**  
Sound Design **Jill BC Du Boff**  
Wig Design **Katherine Carr**  
Original Compositions **Lewis Flynn**  
Assistant Director **Greg Santos**  
Production Stage Manager **Trisha Henson**  
Assistant Stage Manager **James Steele**  
Production Photographer **James Leynse**  
Casting **Stephanie Klapper**

UP NEXT IN OUR VIRTUAL SEASON

November 11 – 15

**SOIL BENEATH:  
AN EMPIRICAL  
DECAY**

created by and starring Chesney Snow

# PRIMARY STAGES

**PRIMARY STAGES** is an Off-Broadway not-for-profit theater company dedicated to inspiring, supporting, and sharing the art of playwriting. We operate on the strongly held belief that the future of American theater relies on nurturing playwrights and giving them the artistic support needed to create new work. Since our founding in 1984, we have produced more than 135 new plays. Our productions and artists have received critical acclaim, including numerous Tony, Obie, Lortel, Off-Broadway Alliance, AUDELCO, Outer Critics' Circle, Drama League, and Drama Desk awards and nominations. Primary Stages supports playwrights and develops new works through commissions, workshops, readings, and our education and engagement programs: the Dorothy Strelsin New American Writers Group, Marvin and Anne Einhorn School of Performing Arts (ESPA), Teenwrights, Primary Plus Developmental Reading Series, our Free Student Matinee Program, TixTeen, and the Primary Stages Off-Broadway Oral History Project. Through these programs, Primary Stages advocates for our artists, helping them make important—and often transformative—connections within the theater community. For more information on Primary Stages and our various programs, please visit us at [primarystages.org](http://primarystages.org).

**ANDREW LEYNSE** (Artistic Director) is currently in his 17th season as Artistic Director of Primary Stages. Andrew is a director and founding member of the Primary Stages Dorothy Strelsin New

American Writers Group (now in its 25th year), teaches for Primary Stages ESPA (Einhorn School of Performing Arts) and The Tepper Semester for Syracuse University, and is the Artistic Director of the Colorado New Play Festival in Steamboat Springs, Colorado. Andrew is a proud Board Member of A.R.T./New York and is a graduate of Carnegie Mellon's Directing Program.

**SHANE D. HUDSON** (Executive Director) is a graduate of the Yale School of Drama and Emerson College. Shane has served as Director of Development at Elevator Repair Service, Managing Director of the Yale Cabaret, Associate Director of Development at PlayMakers Repertory Company, General Manager/Marketing Director for Blue Man Group, Theater Manager of the Charles Playhouse, and Executive Director of StageSource. He is an adjunct professor at Marymount Manhattan College.

**CASEY CHILDS** (Founder) founded Primary Stages in 1984 and has directed many productions for the company. He served as the Artistic Program Director for the New Dramatists from 1981-1985 and was the recipient of the Carnegie Mellon Commitment to New Playwrights Award, as well as two Emmy Awards and many nominations for his extensive work in television. He is a past Vice President of the Directors' Guild of America and a past trustee of The National Association of Television Arts and Sciences. Casey has a BFA in acting and an MFA in directing from Carnegie Mellon University.




"Legends of Texas"  
by  
Nilsa Reyna  
Monday September 21st, 2020  
@ 7pm ET



"Derecho"  
by  
Noelle Viñas  
Thursday September 24th, 2020  
@ 7pm ET



"Hostel Play"  
by  
Andres Osorio  
Monday November 30th, 2020  
@ 7pm ET



"The Lonely"  
by  
Andrew Rincón  
Thursday December 3rd, 2020  
@ 7pm ET

**PRIMARY STAGES**

**INTENSIVE MENTORSHIP  
DIGITAL SERIES  
2019-2020**

**LatinX**  
Playwrights  
circle



# PRIMARY STAGES STAFF

**Andrew Leynse**  
Artistic Director

**Shane D. Hudson**  
Executive Director

**Casey Childs**  
Founder

**Covi Loveridge Brannan**  
Artistic Fellow

**Sue Breger**  
Government and Education Affairs

**Dean A. Carpenter**  
General Manager

**Erin Daley**  
Associate Artistic Director

**Braley Degenhardt**  
Digital Marketing and  
Social Media Coordinator

**Will Duty**  
Production Manager

**David L. Goldsmith**  
IT and Rentals Manager

**Christianne Greiert**  
Teenwrights Administrator

**Kendra Holloway**  
Development Associate

**Kelly Letourneau**  
ESPA Student Services Associate

**Sarah Matteucci**  
Director of ESPA

**Claudia McCoy**  
Assistant General Manager

**Lucy McMichael**  
Associate to the Artistic Director

**Sally Plass**  
Off-Broadway Oral History Project Director

**Will Pomerantz**  
Teenwrights Administrator

**Erica Raven-Scorza**  
Director of Development

**Sofia Vilches**  
Marketing and Development Intern

**Ted Stephens III**  
Graphic Designer, The Numad Group

**General Press Representative**  
Matt Ross Public Relations:  
Matt Ross, Liz Lombardi,  
Claire Wojciechowski

**Dorothy Strelsin New American  
Writers Group**  
Kevin Artigue, Hilary Bettis,  
Eleanor Burgess, Chisa Hutchinson,  
Elizabeth Irwin, Jon Kern,  
Matthew Minnicino, Madhuri Shekar

**Company-in-Residence**  
Latinx Playwrights Circle

**Louise Rockwell Scholars**  
Lluvia Almanza, Doug Harris, Kevaughn  
Harvey, Margaret Ivey, Yani Perez

**Accountants**  
WithumSmith+Brown, PC

**Legal**  
Andrea Risoli, Esq.

**Insurance**  
DeWitt Stern Group

**Finance Consultant**  
Erica Whelan

# 59E59 THEATERS

**59E59 THEATERS** Since 2004, Drama Desk Award-winning 59E59 Theaters has been dedicated to hosting the best theater from across the country and around the world to premiere in the heart of Midtown. This Off Broadway destination is a spectacular, modern theater complex boasting three performance spaces, presenting live performances 50 weeks a year. 59E59.org

## 59E59 THEATERS STAFF

Managing Director..... Brian Beirne  
Artistic Director..... Val Day  
Marketing Director..... Kirsty Gaukel  
Associate Curator/Finance..... Jessica Hart  
Production Manager..... Lauren Parrish  
Director of Ticketing Services..... Kelvin Veras

## ALLIANCE OF RESIDENT THEATRES

Primary Stages is a member of the Alliance of Resident Theatres/New York, the service organization for NYC's non-profit Off- and Off-Off-Broadway theatres.

# Save the Date!

**PRIMARY** STAGES VIRTUAL *Gala*

WEDNESDAY, OCTOBER 21, 2020

8:00pm EST Celebration

Free virtual event streaming on YouTube!

Honoring our dedicated **NYC PUBLIC SCHOOL TEACHERS &**  
Long-time ESPA Faculty Member Drama Desk-Nominated Composer/Lyricist  
**ADAM GWON**

Hosted by Emmy Award-Winning Comedian **JUDY GOLD**



**Featuring Performances and Tributes by**

Lynn Ahrens, Deborah S. Craig, Santino Fontana, Jessica Hershberg, Troy Iwata,  
Jay Armstrong Johnson, & surprise guests (program subject to change)

**RSVP AT [PRIMARYSTAGES.ORG/GALA](https://primarystages.org/gala)**

For access to our pre-show VIP Reception, please contact the Development Department  
about becoming a sponsor at **212.840.9705** or **[gala@primarystages.org](mailto:gala@primarystages.org)**

**PRIMARY** STAGES

ESPA



**ACT · WRITE · DIRECT**



**COLLABORATE**

**Join Primary Stages  
Einhorn School of Performing Arts!**

Interested in honing your craft and creating new artistic relationships? Primary Stages ESPA offers classes in Acting, Writing, and Directing for all artists, in all stages of their careers. Our focus is on nurturing, honoring, and advocating for emerging artists by providing them countless developmental opportunities, space to write and rehearse, and a family of collaborators.

**Fall Online Classes On Sale Now!**  
**TO ENROLL, VISIT [PRIMARYSTAGES.ORG/ESPA](http://PRIMARYSTAGES.ORG/ESPA)**

A woman with dark curly hair, wearing a red cardigan over a light-colored shirt and dark pants, is sitting on a wooden bookshelf. The bookshelf is filled with books and has several small drawers on the right side. The background is a wall with colorful, square panels in shades of blue, green, and orange.

# WHY SUPPORT PLAYWRITING AT PRIMARY STAGES?

It's simple. You love theater. You want to see new work and new perspectives on stage. You think training the next generation of theater artists is important. You believe all New Yorkers should have access to art regardless of financial means. You know that experiencing a diverse range of plays that represent all voices is significant in the creation of empathy and understanding in the world. You understand that producing theater is expensive, but definitely worth the investment. You are eager to help.

As a **PRIMARY PARTNER**, you are guaranteed the best seats in the house. You receive concierge ticketing services with our patron hotline. You are granted access to private readings, rehearsals, Opening Nights, and other intimate events with our artists. You meet others who value and share the same love for theater as you do. You become a true collaborator in our mission to inspire, support, and share the art of playwriting.

TOGETHER WE...

## SERVE

Over 20,000 theater-goers, artists, and students each season through our mainstage productions

## NURTURE

600 early-career and established artists through the artistic home provided by ESPA, which offers more than 100 courses and workshops each year

## DEVELOP

20 new works annually through Primary Plus, playwright residencies, commissions, readings and workshops, and The Dorothy Strelsin New American Writers Group

## TEACH

40 public high school students how to write their first script and find their voice in Teenwrights, our free after-school playwriting program

### YOUR SUPPORT MAKES IT HAPPEN.

Join our family of partners, playwrights, directors, and performers.  
Membership starts at \$500.

To join, and for benefits levels, visit [primarystages.org/partners](http://primarystages.org/partners), call 212.594.2125, or email [kendra@primarystages.org](mailto:kendra@primarystages.org).



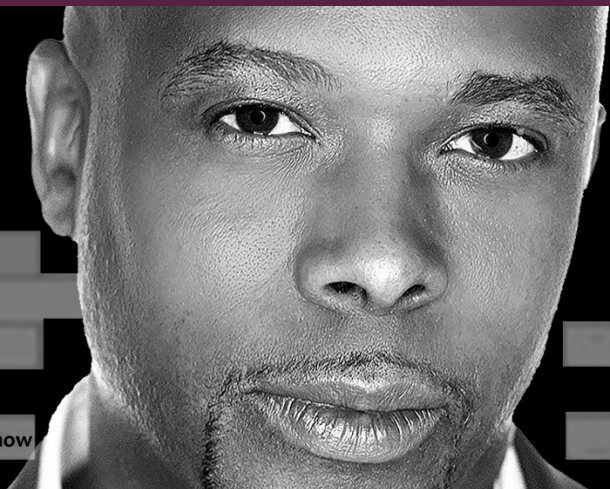
# OUR 2020 FALL VIRTUAL SEASON

November 11 – 15

SOIL BENEATH:  
AN EMPIRICAL

DECAY

created by and starring Chesney Snow



The Night  
Watcher

Written and performed by  
Charlayne Woodard

November 18 – 22

## LIVING ROOM COMMISSIONS

FEATURING

INDA  
CRAIG-GALVÁN

KATE  
HAMILL

CHESNEY  
SNOW

SUSAN SOON  
HE STANTON



PRIMARYSTAGES.ORG

# PRIMARY STAGES CORPORATE AND FOUNDATION DONORS

Primary Stages gratefully acknowledges the generous support of the following institutions:

## \$50,000 AND ABOVE

NYC COVID-19 Response & Impact Fund in  
The New York Community Trust  
The Howard Gilman Foundation ◇  
The Lucille Lortel Foundation ◇  
The Shubert Foundation  
The Harold & Mimi Steinberg Charitable Trust  
The Tow Foundation ◇  
The Winston Foundation, Inc.

## \$25,000-\$49,999

Gibson Dunn  
JTS Fund at the New York Community Trust  
Laurents/Hatcher Foundation  
The Blanche and Irving Laurie Foundation ◇  
The Ambrose Monell Foundation ◇  
The Rockwell Foundation  
Virginia B. Toulmin Foundation ◇

## \$10,000-\$24,999

Con Edison  
The Excel Group\*  
The Marc Haas Foundation  
Richenthal Foundation  
The Fan Fox & Leslie R. Samuels Foundation  
The Seth Sprague Educational &  
Charitable Trust  
The SHS Foundation

## \$5,000-\$9,999

Axe-Houghton Foundation  
Colgate-Palmolive Urban Education Fund  
Francena T. Harrison Foundation Trust  
The Marta Heflin Foundation  
The Hill-Snowdon Foundation  
The Karma Foundation  
Seedlings Foundation\*  
The Dorothy Strelsin Foundation

## \$1,000-\$4,999

Actors' Equity Foundation  
Anonymous\*  
Creative Artists Agency\*  
The BWF Foundation  
Dramatists Play Service  
Samuel French Inc.\*  
The John Golden Fund  
The Herman Goldman Foundation  
ICM Partners\*  
Chad Kraus Photography\*  
The Dorothy Loudon Foundation  
Neuberger Berman  
The Numad Group\*  
The Jerome Robbins Foundation  
SAG-AFTRA  
David Schwartz Magic\*  
The Shubert Organization\*  
The Geraldine Stutz Trust

\* Includes gifts made to the 2019 Primary Stages Gala.

◇ Includes gifts made to the 35th Anniversary Campaign for the Future of Primary Stages.

# PRIMARY STAGES GOVERNMENT SUPPORT

The Primary Stages Season is supported, in part, with public funds from the New York City Department of Cultural Affairs in partnership with the City Council; New York City Council Speaker Corey Johnson; and the New York State Council on the Arts with the support of Governor Andrew M. Cuomo and the New York State Legislature.



**Council on  
the Arts**

**NYC Cultural  
Affairs**

# PRIMARY STAGES BOARD OF DIRECTORS

Janet Reed Ahearn  
Sue Breger, *President Emerita*  
Casey Childs, *Founder*  
Jamie deRoy  
Douglas Durst  
Arlene L. Goldman  
Kate Hamill  
Eleanor Holtzman  
Shane D. Hudson, *Executive Director*  
Elisabeth Lerner, *Secretary*  
Andrew Leynse, *Artistic Director*  
Gregory M. Macosko, *First Vice President*

Marla Persky, *President*  
Theresa Rebeck  
Robin Rednor-Veghte, *Second Vice President*  
Carol Roaman  
Janet B. Rosen  
Carol Scibelli  
Jeremy Smith  
Ted Snowdon  
Amit Solomon  
Sarah Steinberg, *Treasurer*  
Arline Vogel  
Sharon Washington

## Corporate Advisory Board

Marc Breslaw  
Eric Chelman  
Domingo Diaz  
Katie Graziano  
Jose Mendez  
Heidi Reklis  
R. Lee Stump  
Jose M. Toro, RPA  
Lillian Vasquez

## In Memoriam

Geoffrey Chinn  
Marvin and Anne Einhorn  
Michael Fabrikant  
Louise Rockwell  
Robert Sorensen  
Sandra Westin  
Elizabeth Wilson

## Emeritus Members

Dasha Epstein  
Michael Fabrikant  
Marlene H. Freeman  
Douglas M. Green  
Jonathan C. Herzog  
Ann Blumenthal Jacobs  
Karen La Rosa  
Jose Mendez  
Doug Nevin

# PRIMARY PARTNERS

Primary Partners are generous individual donors who share a love of Primary Stages and our mission. Partners can choose to either take a full tax deduction for their gift or receive exclusive benefits, including personal assistance from the Development Department staff, priority seating in prime locations, invitations to intimate events with today's leading playwrights and actors, and much more. To learn more about becoming a Primary Partner and other giving opportunities, please visit us online at [primarystages.org/support](http://primarystages.org/support).

## Angels

Anonymous\*  
Casey Childs\*  
The Durst Family\*  
Daniel & Rosele Frishwasser  
Arlene L. Goldman\*  
Herrick Theatre Foundation  
Eleanor Holtzman &  
Alexander Holtzman,  
*in memoriam*\*  
Irwin & Ann Blumenthal Jacobs\*  
Gregory Macosko &  
Sharon A. Zane\*  
Jose Mendez & Katie Graziano\*  
Marla Persky & Craig Heberton IV\*  
Robin Rednor-Veghte &  
Robert Kennedy  
Carol Roaman\*  
Janet B. & Marvin Rosen\*  
Carol Scibelli\*  
Ted Snowdon & Duffy Violante\*  
Barbara & David Thomas

Jeremy T. Smith\*  
Amit Solomon\*  
Sarah Steinberg\*  
Arline Vogel & Harry Precourt\*

## Ensemble

Margot Astrachan\*  
Stefany & Simon Bergson\*  
The Svante Bergstrom  
Theater Foundation  
Anne L. Bernstein\*  
Bill Butler  
Diane L. Charlap\*  
The Kenneth H. and  
Margaret L. Childs Trust  
Suzi Dietz  
Dasha Epstein\*  
Johanna & Leslie Garfield  
Jay & Diane Goldsmith\*  
Catherine & Charles Gropper\*  
Russel T. Hamilton  
Catherine Fisco Holmes  
Andrea & Scott Kimmelman  
Renee & Carl Landegger\*  
Theresa Rebeck & Jess Lynn\*  
Nancy Rose & John Kimelman\*  
Susan Rose & Alan Lafer\*

Charles & Deborah Royce  
Barton & Jane Shallat  
Mary Susnjara  
Bob & Ginny Walther  
Cheryl Wiesenfeld &  
Jerry Rosenberg\*  
Elizabeth Wilson, *in memoriam*

## Spotlight

Kristen Anderson-Lopez &  
Robert Lopez  
Eli Bluestone  
Kathleen & Robert Bojanek  
Mary Borba\*  
Luigi Caiola  
Nancy & Ronald Carr\*  
B.A. Goggin  
Bertha Goldman, *in memoriam*  
Willy Holtzman & Sylvia Shepard\*  
David & Martha Ives  
Sharon Karmazin\*  
Judi Krupp  
Riki Kane Larimer\*  
Karolynn Lestrud\*  
Andrew Leynse & Mary Bacon\*  
Jeffrey Melnick, *in memoriam*  
Jill Mortensen & Kay Phillips\*

## Leading Players

Sue Breger\*  
Jamie deRoy\*

# PRIMARY PARTNERS (CONT'D)

Hubert Neumann & Debra Purden ◊  
 Mary Ann & Bruno A. Quinson ◊  
 Joan Raffé  
 Dolores & Howard Reed,  
*in memoriam*  
 Daryl Roth  
 Jenna and Paul Segal\*  
 Jose M. Toro\*  
 Christian & Lonna Yegen

## Centerstage

Anonymous  
 Catherine Adler\*  
 Barbara & Paul Bernstein  
 Debra & James Buslik\*  
 Jean & Juan Carlos Cappello\*  
 Michael T. Cohen\*  
 Alisa Cohn  
 Paul Dalio\*  
 Paula Kaminsky Davis\*  
 Cory & Bob Donnalley Foundation  
 Kenneth & Lori Einhorn\*  
 Danielle Epstein & Dina Shapiro\*  
 Paul Fonteyne\*  
 Elliot Fox & Stephanie Lubroth ◊  
 Steven Goldman ◊  
 Valerie Gordon-Johnson &  
 Doug Johnson\*  
 Margaret & Tom Haughey ◊  
 Andrea & David Holbrook  
 Shane D. Hudson &  
 Mikkel Brogger\*  
 Martin Hummel ◊  
 Rory & David Jones  
 Paul & Emily Kandel\*◊  
 Drs. Judith & Sheldon E. Kaufman ◊  
 Allan & Anita Lubarsky ◊  
 Stephen & Carolyn McCandless ◊  
 Evangeline Morphos\*  
 D.V. Nayak  
 John K. Orberg  
 Lisa Orberg  
 Ellen & Sam Sporn  
 R. Lee Stump & Abby Roth\*  
 Robert & Esther Wiesenfeld\*  
 Morton Wolkowitz & Anita Keal\*

## Upstage

Janet Reed Ahearn & Dan Ahearn\*  
 Rick & Shelli Angel\*  
 Wendy Barasch\*  
 Jackie Barth & Jay Nydick  
 Stephen & Sondra Beninati\*  
 Marylou Berk\*  
 Eric Chelman\*  
 Michael E. Cohen\*  
 Charles Copeland\*  
 Doreen Cronin ◊  
 Steve Diamond & Karen Goldman,  
*in memoriam*\*  
 The Diamonstein-Spielvogel  
 Foundation  
 Domingo J. Diaz\*  
 Roxanne Donovan\*  
 Fred & Suzan Ehrman  
 Barbara Cutler Emden\*  
 Angelina Fiordellisi\*  
 Dr. Leonard Freeman,  
 Marlene Freeman & Joy Freilich\*  
 Barbara Freitag\*  
 Susan Garruto  
 Yvette A. Geary

Corinne Hayoun, Management\*  
 Nancy Hollander ◊  
 Robin Jones  
 Claudette & Steven Kunkes\*  
 Lee Laimbeer  
 Thomas Lally  
 Michael Loeb & Adria Belport\*  
 The Greg and Mari Marchbanks  
 Family Foundation\*  
 Judy Lynn Prince & Bob Haiman  
 Encarnita & Robert Quinlan\*  
 Daniel & Paula Reingold\*  
 Heidi Reklis\*  
 Sandra Samberg &  
 Stephen Marshall  
 Michael Schaefer\*  
 Niki & Tony Scialli  
 Edward Trach  
 Lillian Vasquez,  
 PEST Elimination Systems\*

## Downstage

Lynn Ahrens & Neil Costa\*  
 Anonymous ◊  
 Constance Beaty  
 Allison Blinken  
 Helen & Abe Chutorian  
 Carol Dallos & Michael Fabrikant,  
*in memoriam*  
 Tom & Linda Dupree  
 Michael Ellenberg  
 Robert H. and Elizabeth Fergus  
 Foundation  
 Eleanor Fink  
 Tom Fontana & Sagan Lewis  
 Shirley & David Ginzberg  
 David L. Goldsmith  
 Mark & Elizabeth Gormley  
 Molly Gurney  
 Gunilla N. Haac  
 Julia Hansen  
 Margaret & John Hofbeck\*  
 Whitney & Fred Keen  
 Willette Klausner  
 Jane & Don Lebell\*  
 Richard M. Leder & Guifeng Xia  
 James & Wendy Leynse\*  
 Arthur & Merle Nacht  
 Martin Platt & David Elliott\*  
 Harold & Leslie Porosoff  
 Daniel & Joanna Rose  
 Daryl Roth\*  
 Holly Rothkopf & Stuart Eisenberg  
 Fiona Rudin  
 Nancy L. Savitt & Bill Farrell  
 Naomi Seligman  
 Dan Shaheen\*  
 Steve Shane\*  
 Susan & Zachary Shimer  
 Susan & Robert Skolnick  
 Tamar & Lawrence Skolnick  
 Michelle & Stephen Stoneburn  
 Sarena Straus\*  
 Haley Swindal & Jack Tantleff\*  
 Bernard & Sheila Teig  
 Debra & Henry Terranova\*  
 Kara Unterberg ◊  
 Lynn and Elisha Wiesel  
 Michael and Wilhelmina Wiland\*  
 Francis Williams  
 Jennifer Wu & Claude Fiset  
 Ellen & Allen Zerkín\*

## In the Wings

Anonymous  
 Jill Abel  
 David Ball  
 Jane Bergere\*  
 Joshua Blum\*  
 Laurie Braun\*  
 Rose Caiola\*  
 Dean A. Carpenter\*  
 Claudia Catania\*  
 Stacey Cook  
 Gary DiMauro\*  
 Judith Esterquest  
 Matthew Fassler & Mandy  
 Greenfield\*  
 William & Jodi Felton\*  
 Lynn & Paul George  
 Di Glazer\*  
 Martin Gould\*  
 Melissa Greener  
 Ruth & Stephen Hendel\*  
 Debbie and Marc Howard  
 Brian Kaltner  
 Joan A. Kedziora  
 Gregory Lehane & Laurie Klatscher  
 Willette Klausner\*  
 Leslie & Roy Kozupsky\*  
 Myla Lerner & Larry Kramer  
 Dayna Lucas  
 Jane Macan  
 Serynne & Carl Mangelsdorf\*  
 Barbara Manocherian\*  
 Dr. Marlene Marko &  
 Dr. Loren Skeist  
 Laurie McPhee  
 Ina Meibach\*  
 Geoffrey Menin\*  
 Helena Meyer-Knapp  
 David E. Mogentale\*  
 Tracey Knight Narang\*  
 Lawton Paseka\*  
 Sam Paxhia\*  
 Mary Pepe\*  
 Andrea Risoli\*  
 Christina Rose\*  
 Leslie & Richard Roth  
 Joan Ryan\*  
 Tom Saltarelli & Don Sedia  
 Mitchell Schlansky & Laura Blank\*  
 David & Bronwyn Starr\*  
 Sylvia Steiner  
 Lauren & Kipp Stevens\*  
 David Suffrin\*  
 Mary Tynes  
 Hilda Wenig  
 Francis H. Williams  
 Mary Young

\* Includes gifts made to the 2019 Primary Stages Gala or 2019 Spring Fling.

◊ Includes gifts made to the 35th Anniversary Campaign for the Future of Primary Stages.

The list reflects contributions received as of September 22, 2020. We apologize for any omissions or errors. Due to space limitations, we are unable to list all contributors. Primary Stages wishes to thank all of our generous donors.





Dedicated to inspiring, supporting, and sharing the art of playwriting.  
[PRIMARYSTAGES.ORG](http://PRIMARYSTAGES.ORG)